

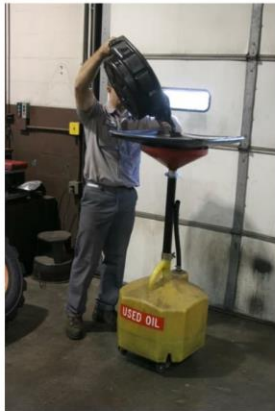
Stormwater Pollution: How to Protect YOUR Water

Good Inside Cleaning Practices for Auto Repair Facilities



Spill Clean Up

Use dry methods for spill clean up (sweeping and absorbent material) and proper disposal (drums). Create, review and use a spill response plan. Make sure your spill response plan and local contact information is posted at your site and that employees know where it is located and how to conduct a spill clean up.



Dispose of Waste Properly

Recycle oil, oil filters, solvents, batteries, lubricants, antifreeze and metal filings collected from grinding/polishing auto parts. Contact a licensed hazardous waste hauler to dispose of waste. **NEVER** pour anything into a storm drain, creek or sanitary sewer drain.

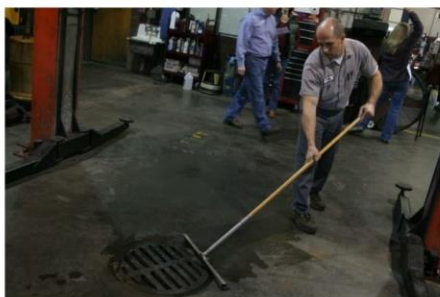
Auto Parts Cleaning

Clean parts in a self contained sink/drum unit when working with solvents. Inspect parts washing units daily for leaks and make necessary repairs immediately. Use aqueous cleaning solutions instead of solvents when possible. Recycle used solutions through a licensed hazardous waste hauler.



Sanitary Sewer

It may be advisable to discharge wash water generated at your shop into the sanitary sewer. Before you do this, contact your local utility to ensure compliance. Pretreatment devices may need to be installed at your facility. Ensure that drains go to the sanitary system and are not cross connected to the storm drain system.



Stormwater and the pollutants it carries flow directly into the nearest creek, river or lake. Do your part to help keep our waters clean for you, your family and our environment.



Report Water Pollution
731-446-5840
stormwater@unioncitytn.gov
unioncitytn.gov/stormwater

Stormwater Pollution: How to Protect YOUR Water

Good Outside Cleaning Practices for Auto Repair Facilities



Spills

Design a spill response plan for all employees to follow. Keep training up to date for everyone. Prepare and use an easy to find spill container for cleaning supplies. Spot clean all areas immediately. Prevent any runoff from entering the stormwater system. Label all drains and inspect them regularly. Pour absorbent materials on fuel spills such as kitty litter, sweep up materials and dispose in proper hazardous waste containers. The spill is not cleaned up until the absorbent is picked up and disposed of properly.



Vehicle Washing

Designate a washing site where water drains to the sanitary sewer or a grassy area. Prohibit oil changes and washing with solvents. Use biodegradable, phosphate free soap in a wash bucket and use a rinse bucket instead of a running



Fluids/Leaking vehicles

Contain the leak immediately. Use a drip pan on an absorbent mat to collect fluids. With outdoor leaks use absorbent socks to protect the storm drain. Use a spill kit to clean up the area immediately.



Dumpsters

Dumpsters should be located away from a storm drain. The top should be covered. No liquid should be discharging from the dumpster. Parking lots should be clear of debris and swept daily.



Stormwater and the pollutants it carries flow directly into the nearest creek, river or lake. Do your part to help keep our waters clean for you, your family and our environment



Report Water Pollution
731-446-5840
stormwater@unioncitytn.gov
unioncitytn.gov/stormwater