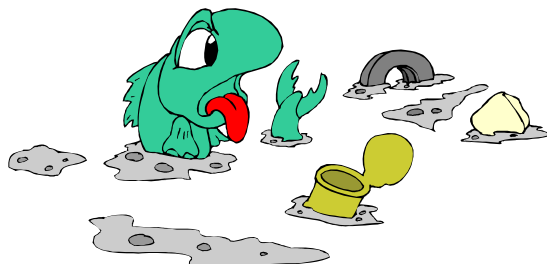


- What we do on land affects the quality of water we drink and use in so many ways.
- Many small sources of pollution add up to cause big water quality problem.
- Natural things such as soil, leaves, grass clippings, and pet waste can cause water pollution.
- Waste dumped into storm sewers goes into local streams and creeks without treatment.
- Automobiles and other vehicles cause water pollution as well as air pollution.

**Everyone Can Make A difference!**



### Reporting of Illegal Dumping or Suspicious Discharges



Reporting will, in great part, rely on participation from the public. Residents who observe illegal dumping or observe pollutants in waterways or storm sewers should contact the Union City Public Works at 731-885-9601 to report a stormwater violation .

### What You Can Do

**You can help minimize illicit discharges by disposing waste in the proper manner.**

- Take used motor oil to a participating oil recycling center.
- Follow label directions regarding container disposal of cleaners.
- Compost yard waste or bag and dispose using solid waste collection programs
- Report any illicit discharge

# Does Illicit Discharge Affect You?



[unioncitytn.gov](http://unioncitytn.gov)  
731-446-5840

## What is Illicit Discharge?

An Illicit Discharge is the induction (accidentally or purposely) of non-storm water to the ground or into the storm sewer.

### Examples of Illicit Discharge:

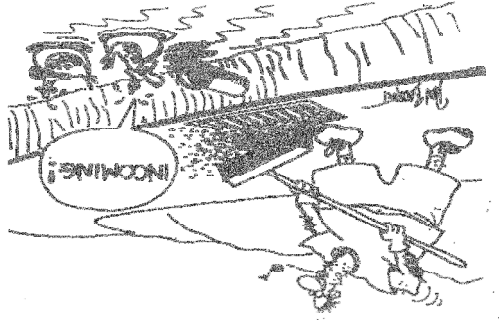
- Sanitary waste water
- Septic tank effluent
- Car wash waste waters
- Motor oil disposal
- Radiator flushing disposal
- Laundry waste waters
- Auto and household toxics disposal
- Leaves and yard waste



## Six Easy Ways That You Can Keep Illicit Discharges Out of Our Waterways

There are simple steps that we can take to solve the problems that illicit discharges create. It is up to YOU, the homeowner and business owners, to clean it up and keep it clean!

1. Used oil, antifreeze, and batteries can be recycled. Clean up any spills immediately.  kitty litter or sawdust will absorb the spill. Be sure to sweep these up as well.
2. Wash your car on the grass so that the water, detergent, and dirt will be filtered  by the soil. A better solution is to take your car to a commercial car wash, where the dirty water is sent to a wastewater treatment plant.
3. Empty bottles of household cleansers, pesticides, and weed killer should be disposed of according to label  directions.
4. Grass clippings in the street should be swept up after each mowing. Grass clippings left in the street are being washed down into the storm sewers and end up in the streams where they have the potential to cause algae  problems.



5. Many household products, including paints, paint thinners, and solvents can be taken to drop off sites.

Paint brushes used with water

based paint can be rinsed in the sink. If you have leftover paint

in a can, and it is latex or water

based paint you can fill the can

with kitty litter and once it is

absorbed you can set it out for trash

pick up.

6. When walking your pet use a bag or

use a scooper to clean up your pet's

waste. In order to keep animal waste

from contaminating our community,

anyone who walks a pet should prop

erly dispose of waste by picking it up,

wrapping it, and either placing it into

the trash or flushing it **UNWRAPPED!**